



MONTHLY MEMBERSHIP PROGRESS REPORT

District 2 T1

Results as of: 6/30/2015

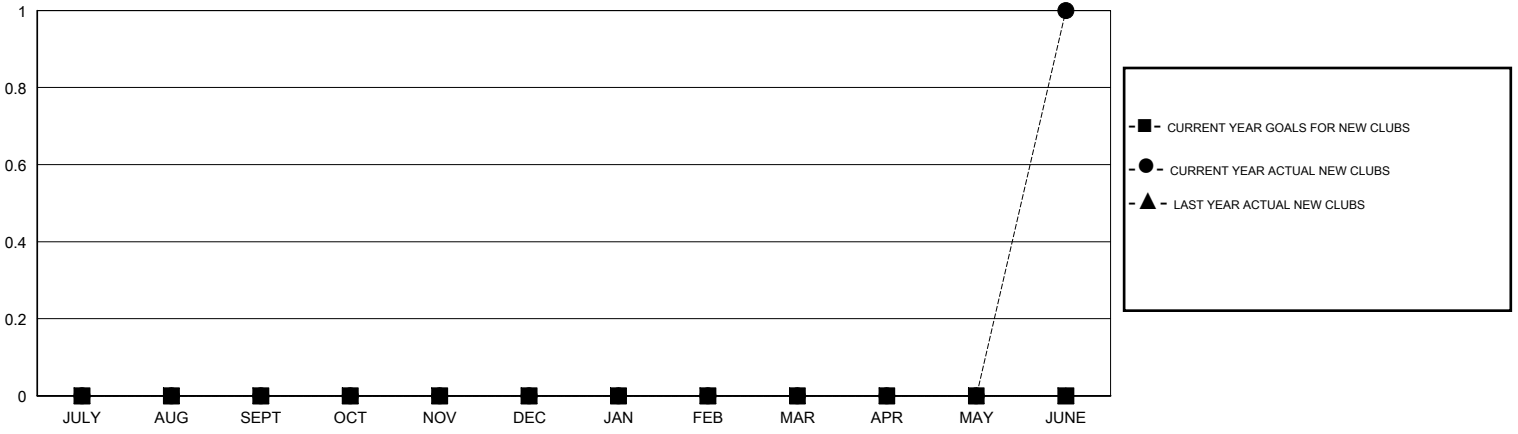
GMT: HAL GRIFFIN

LOCATION TEXAS

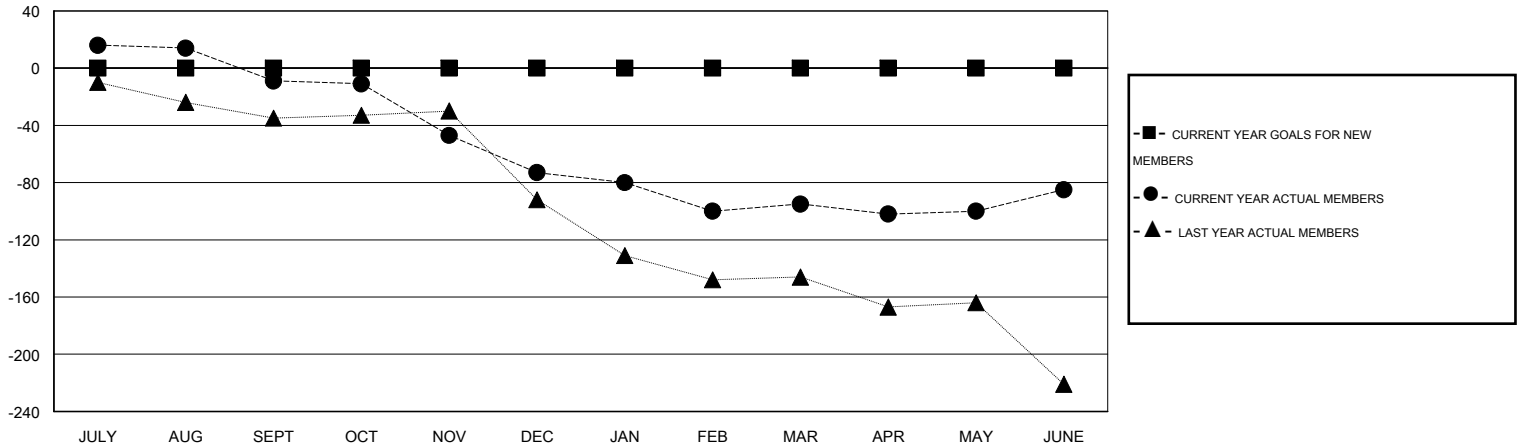
GMT CA 1

Clubs					Members				
RESULTS FOR 2014-2015					RESULTS FOR 2014-2015				
QUARTER	NEW CLUB GOAL	NEW CLUBS	DROPPED CLUBS	NET GAIN/LOSS	QUARTER	NEW MEMBER GOAL	CHARTER AND NEW MEMBERS ADDED	DROPPED MEMBERS	NET GAIN/LOSS
JULY/AUG/SEPT	0	0	0	0	JULY/AUG/SEPT	0	61	70	-9
OCT/NOV/DEC	0	0	3	-3	OCT/NOV/DEC	0	34	98	-64
JAN/FEB/MAR	0	0	1	-1	JAN/FEB/MAR	0	36	58	-22
APR/MAY/JUNE	0	1	0	1	APR/MAY/JUNE	0	50	40	10

GOALS AND ACTUAL NEW CLUBS CUMULATIVE



GOALS AND ACTUAL MEMBERS CUMULATIVE



DROPPED CLUBS: 4	27 CLUBS OF 45 ADDED 1 OR MORE NEW MEMBERS	<u>GENDER DISTRIBUTION</u>	
<u>DROPPED MEMBERS</u>		MALE	937 (72.08%)
DECEASED	CLICK HERE FOR HEALTH ASSESSMENT DATA	FEMALE	363 (27.92%)
CLUB CANCELLED		FAMILY UNIT MEMBERS	162
OTHER		HEAD OF HOUSEHOLD	81
TOTAL		NON-HEAD OF HOUSEHOLD	81